



# GAT MONTHLY MEMBERSHIP PROGRESS REPORT

Results as of: 10/31/2021

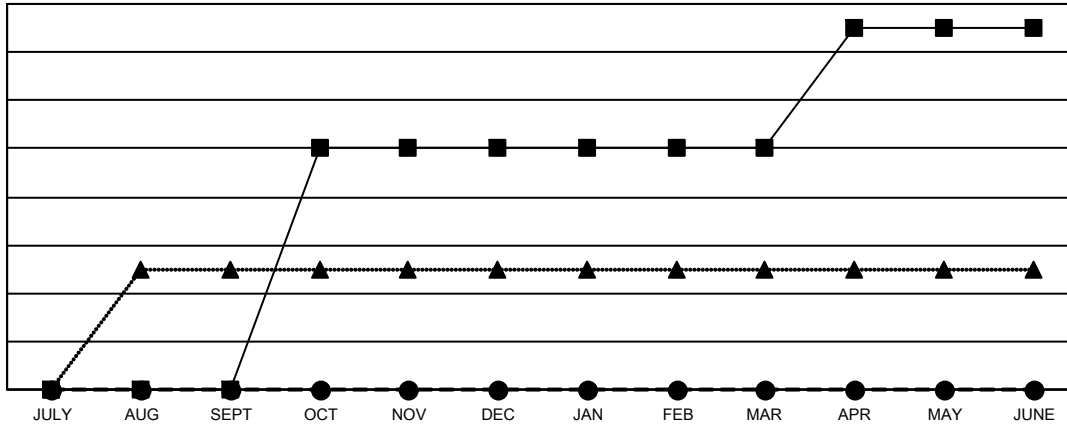
Multiple District C

LOCATION: ALBERTA

| Clubs                 |               |           |               |
|-----------------------|---------------|-----------|---------------|
| RESULTS FOR 2021-2022 |               |           |               |
| QUARTER               | NEW CLUB GOAL | NEW CLUBS | DROPPED CLUBS |
| JULY/AUG/SEPT         | 0             | 0         | 2             |
| OCT/NOV/DEC           | 2             | 0         | 0             |
| JAN/FEB/MAR           | 0             | 0         | 0             |
| APR/MAY/JUNE          | 1             | 0         | 0             |

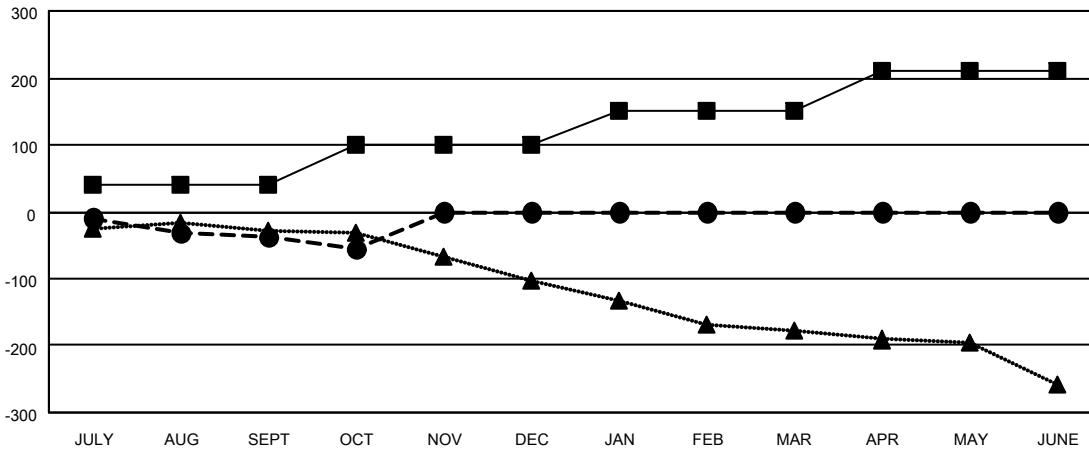
| Members               |                        |                      |  |
|-----------------------|------------------------|----------------------|--|
| RESULTS FOR 2021-2022 |                        |                      |  |
| QUARTER               | MEMBER GROWTH NET GOAL | MEMBER GROWTH ACTUAL | DROPPED MEMBERS ACTUAL (including transfers) |
| JULY/AUG/SEPT         | 40                     | 52                   | 85   |
| OCT/NOV/DEC           | 60                     | 17                   | 33   |
| JAN/FEB/MAR           | 50                     | 0                    | 0  |
| APR/MAY/JUNE          | 60                     | 0                    | 0  |

GOALS AND ACTUAL NEW CLUBS CUMULATIVE



- CURRENT YEAR GOALS FOR NEW CLUBS
- CURRENT YEAR ACTUAL NEW CLUBS
- ▲- LAST YEAR ACTUAL NEW CLUBS

GOALS AND ACTUAL MEMBERS CUMULATIVE



- MEMBER GROWTH NET GOAL
- MEMBER GROWTH ACTUAL
- ▲- LAST YEAR MEMBERSHIP ACTUAL

|                         |   |  |
|-------------------------|---|--|
| <b>DROPPED CLUBS: 2</b> | <b>26 CLUBS OF 183 ADDED 1 OR MORE NEW MEMBERS</b>        | <b>GENDER DISTRIBUTION</b>                 |
| <b>DROPPED MEMBERS</b>  | <a href="#">CLICK HERE FOR CUMULATIVE MEMBERSHIP DATA</a> | MALE 2,480 (69.04%)                        |
| DECEASED 21             |   | FEMALE 1,112 (30.96%)                      |
| CLUB CANCELLED 0        |   | NON BINARY 0 (0.00%)                       |
| OTHER 97                |   | PREFER NOT TO ANSWER 0 (0.00%)             |
| <b>TOTAL 118</b>        |   | <b>TOTAL FAMILY UNIT MEMBERS 592</b>       |
|                         |   | <b>FAMILY MEMBERS PAYING HALF DUES 303</b> |